



Customer Service Email: customerservice@kensun.com
Customer Service Line: 1-855-536-7862
Official Website: www.kensun.com



USER MANUAL

LIGHT DUTY
AC/DC
AIR COMPRESSOR



Product Number: KC-D



Car 12V



Home 110V

Dear friend,

We are proudly introducing you to our air compressor model D for home and vehicle use. On conducting a thorough research, we finally have developed a product for you to be pleased with. This inflator was created with you in mind and we hope you will be completely satisfied with the quality, design, and performance.

If you are happy with this purchase, please do not hesitate to tell others about it. If you have any issue with the product, please let us know and be sure, we will help you.

You can reach us at **customerservice@kensun.com**

or toll free at **1-855-Kensun-care (1-855-536-7862)**

As an innovative company, we always want to hear your complaints, comments, and ideas. We do our best to bring you a quality product along with unrivaled customer service. You are guaranteed to be fully satisfied after being treated by our professional and friendly support team.

Your product review is crucial to the success of our business. We would be grateful if you could do us a favor and take the time to write us a product review on Amazon.

To leave a review, go to:



<http://amzn.to/2rkY0rl>

or find the order in “your orders” and click “write a product review”. You can then select the number of stars and write a few words about your experience. It means a lot to us and lets other shoppers know about this great product.

Enjoy!
Your friends at **Kensun**



FULL TWO-YEAR HOME USE WARRANTY

Kensun warrants this product for two years against any defects in material or workmanship. The defective product will be replaced or repaired at no charge. This warranty does not apply to accessories. This warranty gives you specific legal rights and you may have other rights which vary from state to state. This product is not intended for commercial use. If this product is resold or sold by a non-authorized Kensun dealer then the warranty is void. Should you have any questions, please contact us.



SPECIFICATIONS

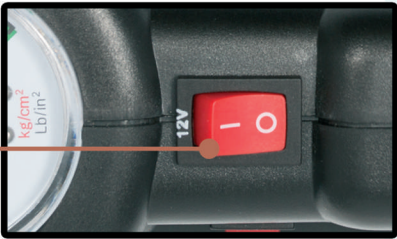
| | |
|--------------------------------|-------------------------|
| Voltage | 12V DC / 110V AC |
| Max Current | <10 A |
| Inflation time to 30 PSI | 10-15 minutes |
| Operating temperature | 122-176 °F |
| Gauge | 260 PSI |
| Max Pressure | 30-40 PSI |
| AC Cable Length | 5.8±0.3 feet |
| DC Cable Length | 9.8±0.3 feet |
| Hose Length | 1.8±0.1 feet |
| Dimensions of unit | 8.9*5.5*3.5 inches |
| Net Weight | 2.2 pounds |
| Continuous Working time | No more than 10 minutes |
| Accuracy of gauge | ±1 PSI |
| Air flow rate | 11 litres per minute |
| Fuse | 1 A |

**Based on a flat standard tire
195/65R15 to 35 PSI**

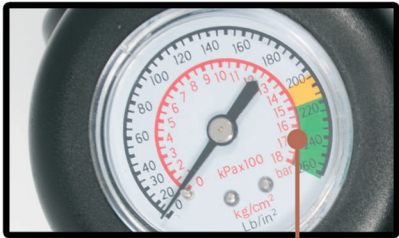
FUNCTIONAL DESCRIPTION



AC Switch



DC Switch



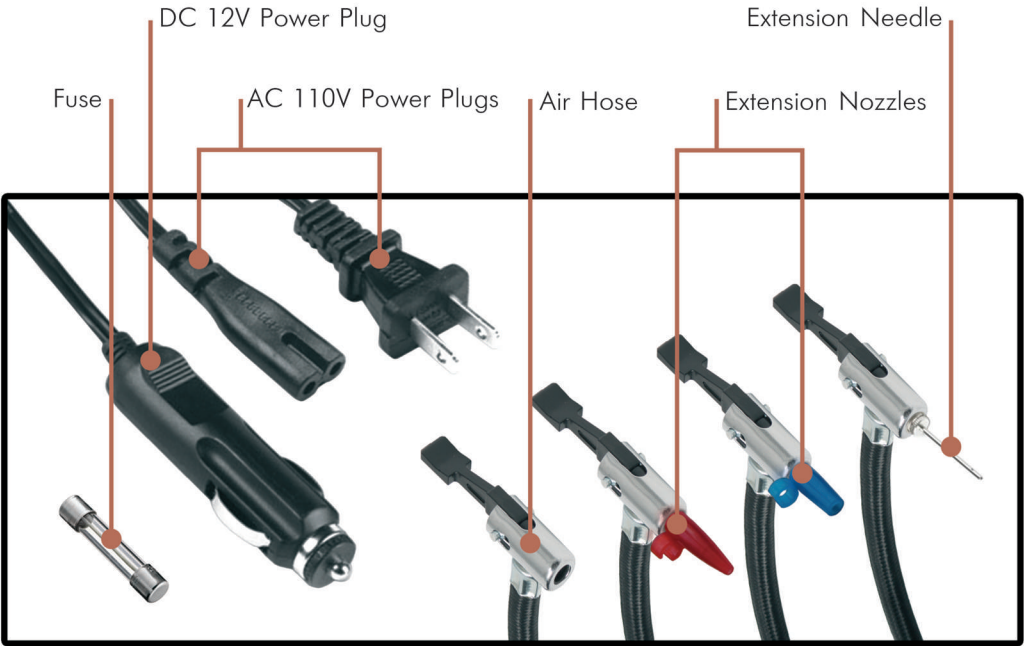
Analog Gauge



DC 12V Socket

Fuse Holder

AC 110V Socket



DC 12V Power Plug

Extension Needle

Fuse

AC 110V Power Plugs

Air Hose

Extension Nozzles

INTRODUCTION

Your Inflator is designed to be used in and around the home using its 110V cord or in most vehicles with a standard 12V socket using its 12V adaptor cord. As with any battery-operated appliance, when the Inflator is used in 12V mode, performance will vary directly with the battery's state of charge. Naturally, the higher the current drawn by the Inflator, the more the battery power will be decreased.

OPERATING INSTRUCTIONS



WARNING: Risk of Bursting. Too much air pressure causes a hazardous risk of bursting. Check the manufacturer's maximum pressure rating for objects being inflated.



TO INFLATE TIRES:

Place the universal valve adapter over the air stem.

Press lever on universal valve adapter down to lock in place.

1



2

Plug power cord into power accessory outlet or home outlet.



3

Set AC or DC switch to «ON» position. As soon as the pressure reaches the value you want, set AC or DC switch to «OFF» position.



Standard tire pressure is 28-35 PSI

ACCESSORY USAGE

1. Put the appropriate nozzle or needle into the tip of the air hose.
2. Press lever on the universal valve adapter down to lock the nozzle or needle in place.
3. Place inflation nozzle or needle into object to be inflated.



NOTE: The extension and standard tapered nozzles and the needle inflator nozzle are provided with your Inflator.

SWITCHES



Depending on the kind of outlet, you can use either top switch (12V) or side switch (110V)



110V AC MODE

- Always fully extend the 110V AC cord before each use.
- To turn the Inflator on, plug in the 110V cord and press the side switch marked "110" ON.
- To turn the Inflator off, turn the switch OFF.



12V DC MODE

- Do not operate inflator when car engine is running, just put the car in accessory mode.

Note: some vehicles require their engine to be on to power the DC socket.

- Always fully extend the 12V DC cord before each use.
- To turn the inflator on, plug the 12V adaptor into your vehicle's 12V accessory socket and press the top switch marked "12V".
- To turn the Inflator OFF, turn the switch marked "12V" OFF.



MAINTANCE

All parts are lifetime lubricated, and no oiling is required. Use mild soap and damp cloth to clean the tool.

IMPORTANT: To assure product SAFETY and RELIABILITY, repairs, maintenance and adjustment should be performed by authorized service centers, always using identical replacement parts.



TROUBLESHOOTING

Unit will not start.

| <u>Possible Cause</u> | <u>Possible Solution</u> |
|------------------------------------|--|
| Wrong AC/DC switch setting. | Make sure you are using a home AC plug and the AC switch is turned on and vice versa. |
| Fuse is blown. | Replace the fuse. |
| Cord not plugged in. | Plug the tool into a working outlet. |
| Circuit fuse is blown. | Replace the circuit fuse. (If the product repeatedly causes the circuit fuse to blow, discontinue use immediately) |
| Circuit breaker is tripped. | Reset the circuit breaker. (If the product repeatedly causes the circuit fuse to blow, discontinue use immediately and have it serviced at a service center or authorized servicer) |
| Cord is damaged. | Have the cord replaced at a service center or authorized servicer. |



GENERAL SAFETY RULES

Read all instructions before operating the product. Failure to follow all instructions listed below may result in electric shock, fire and/or serious injury.

SAVE THESE INSTRUCTIONS

KEEP CHILDREN AWAY.

Do not let children play with the tool or extension cord. They should be kept away from work area.

STORE IDLE TOOLS.

When not in use, tools should be stored in a dry, and high or locked-up place — out of reach of children.

DON'T FORCE THE TOOL.

It will do the job better and safer at the rate for which it was intended.

USE THE RIGHT TOOL.

Don't force a small tool or attachment to do the job of a heavy-duty one. Don't use it for the purpose not intended.

DISCONNECT OR LOCK OFF TOOLS

Disconnect/lock off the tools when the compressor is not in use, before servicing, and when changing accessories.

REMOVE ADJUSTING KEYS AND WRENCHES.

Form a habit of checking if the keys and adjusting wrenches are removed from tool before turning it on.

AVOID UNINTENTIONAL STARTING.

Don't carry tool with finger on the switch. Be sure the switch is off when plugging in.

AVOID LOW VOLTAGE ON BATTERY

You are meant to use the inflator with the car turned on in accessory mode (not longer than 10 min, which is the maximum continuous working time) but not with the engine running since it is bad for the environment and is illegal in many places to leave the engine running for more than a few minutes. If the car is completely off, the cigarette plug does not work at all.

EXTENSION CORDS.

Make sure your extension cord is in good condition. When using an extension cord, be sure to use one heavy enough to carry the current your product will draw. An undersized cord will cause a drop in line voltage resulting in loss of power and overheating.

OUTDOOR USE EXTENSION CORDS.

When tool is used outdoors, use only extension cords intended for use outdoors and so marked.

STAY ALERT.

Watch what you are doing. Use common sense. Do not operate tool when you are tired.

CHECK DAMAGED PARTS.

Before further use of the tool, a guard or other part that is damaged should be carefully checked to determine that it will operate properly and perform its intended function. Check for alignment of moving parts, binding of moving parts, breakage of parts, mounting, and any other conditions that may affect its operation. A guard or other part that is damaged should be properly repaired or replaced by an authorized service center unless otherwise indicated elsewhere in this instruction manual. Have defective switches replaced by authorized service center. Do not use tool if switch does not turn it on and off.

DO NOT OPERATE portable electric tools near flammable liquids or in gaseous or explosive atmospheres. Motors in these tools normally spark, and the sparks might ignite fumes.



ADDITIONAL SAFETY WARNINGS

WARNING! RISK TO BREATHING:

The compressed air from your inflator is not safe for breathing. Never inhale air from your inflator or from a breathing device connected to the inflator.

WARNING! RISK OF ELECTRIC SHOCK:

Turn off and unplug inflator when not in use, when cleaning, or when changing nozzles.

Do not expose inflator to rain or wet conditions. Water entering the inflator will increase the risk of electric shock.

WARNING! RISK OF FALLING:

Since the vibration produced by the inflator may cause it to “walk”, do not operate on a high shelf or other surface. Operate at ground or bench level.

WARNING! RISK OF UNSAFE OPERATION:

Do not modify or attempt to repair. Never drill into, weld, or make any modifications to the inflator or its attachments.

Do not operate inflator when car engine is running.

Operate only with the accessories included or those rated for 160 p.s.i. or higher. The use of any accessory not recommended for use with this tool could be hazardous.

- Never “horseplay”. High pressure air is dangerous. Don’t direct air-flow at yourself or others.

WARNING! RISK OF FIRE:

- Inflator can become hot during use. Allow inflator to cool for 30 minutes before storing away.
- Never carry the inflator by the hose.

WARNING! This product or its power cord contains lead, a chemical known to the State of California to cause cancer and birth defects or other reproductive harm. Wash hands after handling.

California Proposition 65

PLEASE NOTE: If the compressor has been working nonstop for more than 15 minutes, please give it a 10 minute break to cool off before using further.

If you need to fill up a tire from 0 PSI, you can use a jack to lift the car which will make it easier to inflate the tire or alternatively take 5-10 minute breaks if the compressor shuts off especially in hot weather.

WARNING! The use of any accessory not recommended for use with this compressor could be hazardous.



Service Information

The Kensun Customer Service Center is staffed with friendly and trained personnel to provide customers with efficient and reliable service and support.

Whether you need technical advice, repair, or genuine factory replacement parts contact Kensun at

1-855-536-7862

customerservice@kensun.com

Please have your order number available when calling for support. In most cases, a Kensun representative can resolve the problem over the phone. If you have a suggestion or comment, give us a call. Your feedback is vital

Thank you for choosing



www.kensun.com

KENSUN Inc.